

The main screen

There are major tabs (Setup, Wireless, etc) and under each major tab **1** are sub tabs **2** (Basic Setup, DDNS, etc) for this device. On the left are categories of configuration and on the right are configurable fields.

Other manufacturers may have a different layout such as having major “tabs” on the left sidebar.

You want to at least look at all of the options in both major and minor “tabs.”

Internet Setup may also be called “WAN”

For most ISPs the default settings will automatically connect.

Network setup may also be called “DHCP settings” Most features you can accept the defaults unless you have a special situation.

You may want to change the DNS servers for a faster response than your ISP’s system or for security filters.

Reboot

Some pages may have a “save” button. If you don’t click it, your settings may not be saved when you move away from the page.

The screenshot shows the Cisco router's Setup page. The left sidebar has a 'Setup' tab highlighted with a '1' and a '2' below it. The main content area is titled 'Automatic Configuration - DHCP'. It includes fields for Host Name, Domain Name, MTU (Auto, Size: 1500), IP Address (172.16.254.1), Subnet Mask (255.255.255.0), Router Name (Cisco42135), DHCP Server (Enabled), Start IP Address (172.16.254.100), Maximum Number of Users (6), IP Address Range (172.16.254.100 to 105), Client Lease Time (15 minutes), Static DNS 1 (8.8.8.8), Static DNS 2 (208.67.222.222), Static DNS 3 (0.0.0.0), WNS (0.0.0.0), and Time Zone ((GMT-05:00) Eastern Time (USA & Canada)). A checkbox for 'Automatically adjust clock for daylight saving changes' is checked.

First things first

First off, find the screen to change the default password to log into the router. This will protect you from having the router compromised by malware inside your network.

Equally important, disable remote access **3** to prevent anyone modifying your router from the internet.

UPnP **4**

Disable UPnP. It is usually used for peer-to-peer interchange with others on the internet. If you find a device such as a game machine or DVR or a chat program require it – and you want to use those features – you can turn it on for the moment while the device configures itself. Then turn it back off.

The screenshot shows the Cisco router's Administration page. The left sidebar has a 'Management' tab highlighted with a '3' and a '4' below it. The main content area is titled 'Router Password'. It includes fields for Router Password, Re-Enter to Confirm, Access via (HTTP checked, HTTPS unchecked), Access via Wireless (Enabled checked, Disabled unchecked), Remote Management (Enabled unchecked, Disabled checked), Access via (HTTP checked, HTTPS unchecked), Remote Upgrade (Enabled checked, Disabled unchecked), Allowed Remote IP Address (Any IP Address), Remote Management Port (8080), SIP ALG (Enabled unchecked, Disabled checked), UPnP (Enabled unchecked, Disabled checked), Allow Users to Configure (Enabled checked, Disabled unchecked), Allow Users to Disable Internet Access (Enabled checked, Disabled unchecked), and buttons for 'Back Up Configuration' and 'Restore Configuration'.

Wireless

This is the section that may need the most attention.

SSID 5

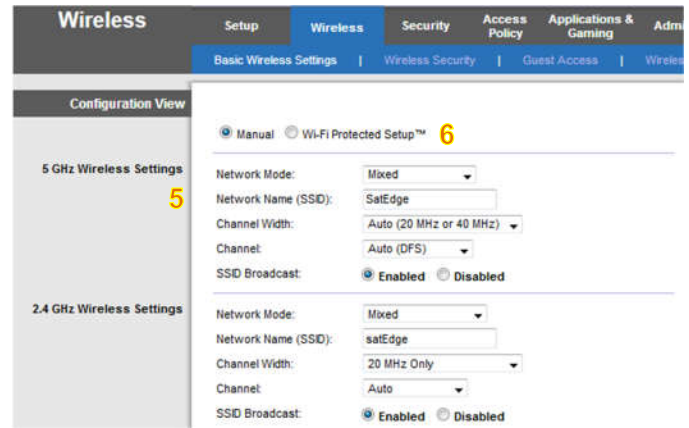
This is the name that you see when you connect your WiFi device to *your* network.

2.4 and 5 GHz

New WiFi radios can work on more than one bandwidth (think VHF and UHF). This device allows separate settings for each bandwidth – that’s not common.

WPS 6

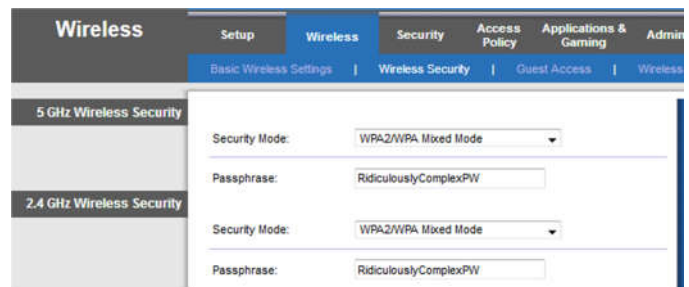
This is a scheme to “simplify” connecting to WiFi without requiring a password. Unless you absolutely need it, turn it off. The “code” can be broken in minutes.



Wireless security

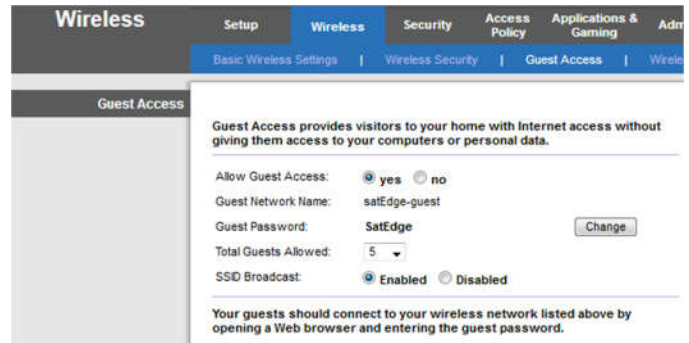
You want to choose some flavor of (Personal) WPA unless you have ancient devices that do not support it.

You are allowed up to 63 characters for the passphrase your devices use to connect. You need to make it long and complex enough to resist guessing, but not impossible to enter on a phone’s keyboard.



Guest access

This provides some separation between the network with your tax return and the Tuesday night poker club (or teenage kids). If you need it, use the strongest restrictions you can.



Security

Most of the settings on this screen are for advanced users or special situations.

